





LENCO MARINE FACTORY

We make the best boats better!

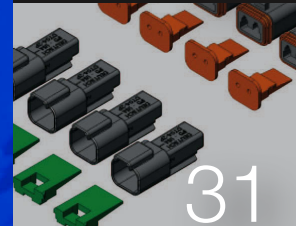
Here at Lenco Marine, “We make the best boats better!” is more than just a slogan. They are words we live by. Our 40,000-sq.-ft. manufacturing facility in Stuart, Florida, is home to the industry's leading innovative technology. This allows us to produce the highest quality products available, ensuring years of trouble-free service to Lenco owners around the globe.

Each trim tab is cut and shaped using our advanced laser cutter for a precise fit — time after time. Lenco's in-house design and engineering department affords us extensive research and development capabilities. Our dedication to quality and attention to detail gives every member of the Lenco staff the confidence to say, “We make the best boats better!”



CONTENTS

▶ AUTO GLIDE™ BOAT LEVELING SYSTEM	02-07
▶ Lenco ELECTRIC TRIM TAB KITS	08-17
▶ Lenco SWITCH KITS	18-21
▶ Lenco HATCH LIFTS	22-25
▶ ACTUATORS & ACCESSORIES	26-29
▶ ELECTRIC ACTUATOR OVERVIEW	28
▶ BENNETT HYDRAULIC TO Lenco ELECTRIC CONVERSION	30
▶ Lenco ACCESSORIES	31-33

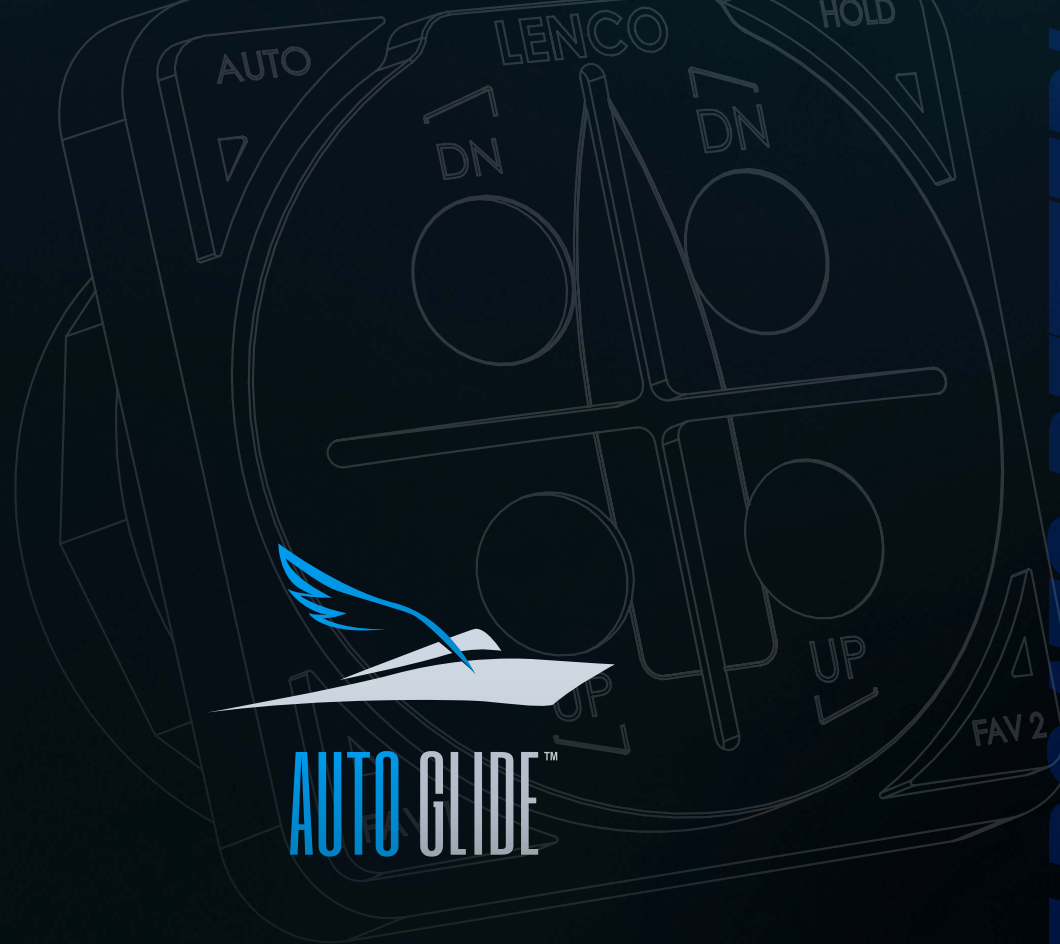




Scan QR code
or visit us at
lencoautoglide.com

Finding the right balance





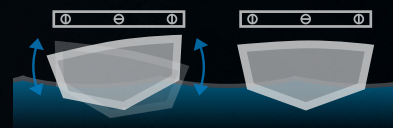
AUTOMATIC BOAT LEVELING SYSTEM

The Lenco Auto Glide helps take your mind off of balancing your boat and back to enjoying your time on the water. Your budget will be balanced as well with the world's best fuel efficiency features. Balance your time, your boat and your budget with the Lenco Auto Glide Boat Leveling System.

Auto Glide Pitch Correction



Auto Glide Roll Correction



FUEL
EFFICIENT



100%
COMPATIBLE



GPS
TECHNOLOGY



ECO
FRIENDLY



PLUG
& PLAY



PRODUCT
CERTIFIED



WE MAKE THE BEST BOATS BETTER!



AUTO GLIDE™ BOAT LEVELING SYSTEM

The world's leading trim tab control system



The Auto Glide Boat Leveling System is quite simply the most advanced, fuel efficient, automatic trim tab control system ever developed. Designed & tested over 6 years to the highest specifications, the system is constantly working to make your boat the best it can be.



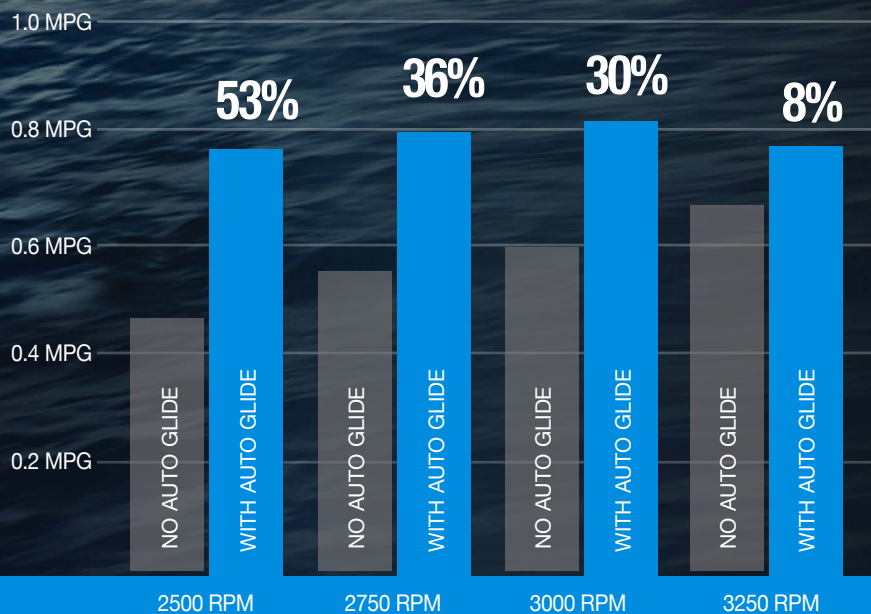
AUTO GLIDE FUNCTIONS, FEATURES & BENEFITS

- ▶ Automatic pitch and roll corrections.
- ▶ Automatically trims boat to the most fuel efficient position.
- ▶ Takes the trim tab operation out of the hands of the operator.
- ▶ Significantly reduces time to plane.
- ▶ Does not adjust during turns, allowing boat to roll naturally.
- ▶ Safety - Minimizes bow rise and improves boat's hole shot performance.
- ▶ Manual override at the touch of a button.
- ▶ Built-in automatic trim tab retraction.
- ▶ Totally waterproof key pad and control box.
- ▶ Easy initial set-up procedure (one time only).
- ▶ Three custom settings: "Hold" mode and (2) "Favorite" modes.

*The 3rd party fuel saving results are based on Cruisers Yachts 48 Cantius with a Volvo D6, 600 IPS, EVC, 435 horsepower engine. Results may vary depending on boat type & engine configuration.



AUTO GLIDE™
BOAT LEVELING SYSTEM



Fuel efficiency at its best

The Auto Glide uses data it receives, such as changes in the GPS speed, engine RPM and fuel consumption to automatically put your boat in its most fuel efficient cruising position.

“All of the system adjustments achieve two very important objectives. One of course is fuel economy but the more important one to us is a more stable and comfortable ride particularly in rough seas.”

Bill Hayward
Bill Hayward
2013 Cruisers Yacht 48'



- Substantial fuel savings.
- Can be installed on any boat with Lenco electric actuators.
- Fast and easy installation.
- Easy retrofit to boats with hydraulic tabs (see page 30).
- Softer, smoother and more comfortable ride.

Scan the QR code for more information or visit
lencoautoglide.com



Installation drawings and information available on **lencoautoglide.com**

AUTO GLIDE AFTERMARKET KITS

**Not sure if you
are operating
your trim tabs
properly?**

**Tired of constantly
adjusting them
every time
someone moves?**

**Frustrated by
spending all your
hard earned money
at the fuel pump?**

If you find yourself asking these questions, then the Lenco Auto Glide Automatic Boat Leveling System is for you! With the Auto Glide on your boat, you can relax and enjoy your time on the water while getting the best cruising performance, comfort and fuel economy possible, all the time!

With everything you need all in one box, these easy-to-install aftermarket kits have been developed for all boats equipped with Lenco electric actuators. Yes, it's that simple.

The system comes equipped with waterproof plug and play Deutsch connections making the installation fast and easy! It is also NMEA 2000 compatible and uses many of the same connectors. The Auto Glide has built-in diagnostic capabilities so if there is ever a problem with connections or communication, the key pad flashes a series of lights indicating the problem.



Retail Box

If you have hydraulic trim tabs and you are interested in the Auto Glide system, check out Lenco's Hydraulic to Electric Conversion Upgrade Kit (page 30). This kit contains everything you need to change out your hydraulic actuators to Lenco electric actuators without having to purchase a new trim tab kit. Once you have our electric actuators installed, you're now compatible for the Auto Glide Boat Leveling System.

Testimonials [Listen to what these Auto Glide customers have to say:](#)

"Enjoying the ride is the most important thing to me. The Auto Glide helps me to forget about controlling my trim tabs and enjoy my experience on the water."

Jose Chao

Jose Chao
*1971 Seabird 27'



"The combination of the High Performance Trim Tabs and the Auto Glide System makes my SeaVee perform like a sports car. I would never have a boat with out it."

Adam Meyerson

Adam Meyerson
2010 SeaVee 29'



"I can't believe the difference, this thing is amazing!!! I cannot express how happy and content I am with this system. Only regret is it took me so long to purchase it."

Frank Naylor

Frank Naylor
*2000 Contender 31'



* Retrofitted using the Lenco Conversion & Performance Upgrade Kit found on page 30.

AUTO GLIDE AFTERMARKET KIT CONTENTS

For Single and Dual Actuator Trim Tab Systems



30255-001 or
30256-001



30248-001 or
30247-001



30259-001D



30262-001D



30266-001



30267-001D



30268-001D



30268-002D



30281-001D



Single Actuator Per Tab System
15500-101



Dual Actuator Per Tab System
15501-101

Lenco Part #	Description of Contents	15500-101 Single Actuator Kit (Quantity in Kit)	15501-101 Dual Actuator Kit (Quantity in Kit)
30254-001D	Auto Glide Key Pad Control	1	1
30255-001	Auto Glide Control Box - For Single Actuator Trim Tab System	1	N/A
30256-001	Auto Glide Control Box - For Dual Actuator Trim Tab System	N/A	1
30248-001	Auto Glide Control Box Harness - For Single Actuator Trim Tab System	1	N/A
30247-001	Auto Glide Control Box Harness - For Dual Actuator Trim Tab System	N/A	1
30259-001D	CAN bus # 1 NMEA 2000 CABLE - 2.5' (76.2 cm)	1	1
30262-001D	CAN bus # 2 GPS / NMEA 2000 Network Adapter Cable Assembly - 2.5' (76.2 cm)	1	1
30266-001	NMEA 2000 (16 CH) GPS Antenna Only	1	1
30267-001D	Tee Connector Only	3	3
30268-001D	Terminating Resistor - Female - 120 ohm	2	2
30268-002D	Terminating Resistor - Male - 120 ohm	1	1
30281-001D	Power Cable - NMEA 2000 Network - 2.5' (76.2 cm)	1	1

See individual Part #s above for replacement components. See page 31 for additional Auto Glide accessories.



Scan QR code
or visit us at
lencomarine.com





LENCO ELECTRIC TRIM TABS

Trim tabs make the single most important difference in the way your boat rides and performs. They are optional on some boats but should be as standard as power trim and tilt. Lenco trim tabs make your boat ride smoother, drier, faster and with increased safety whether on a small skiff or a mega-yacht.



INSTANT
RESPONSE



FUEL
EFFICIENT



100%
ELECTRIC



ECO
FRIENDLY



PLUG
& PLAY



AUTO GLIDE™
COMPATIBLE



PRODUCT
CERTIFIED



made
in USA

WE MAKE THE BEST BOATS BETTER!

Standard Mount Trim Tab Kits

12-Volt

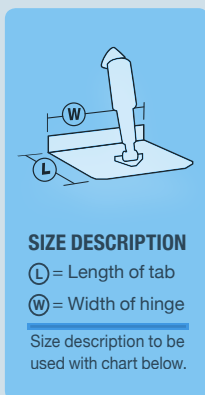
The series that started the electric revolution! Our original Trim Tab design and still the most popular series we build. Ideal for most common style boats from center console fishing boats to cuddy cabin cruisers. Boat lengths 14' (4.3 m) to 69' (21 m).



15001-101

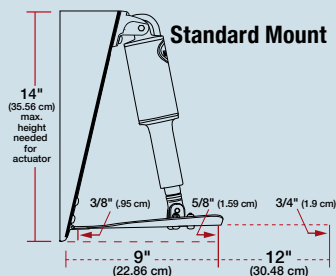


Blades are constructed of 12 gauge (2.7 mm) laser cut 304 stainless steel with a 5/8" (1.6 cm) flared trailing edge & 1/8" (3.2 mm) diameter hinge pin. Upper and lower high impact corrosion proof mounting brackets with mechanical cable gland seal.



Kits include:

- ▶ (2) 12-gauge stainless steel standard finish blades
- ▶ (2) 15054-001 actuators with 6' (1.8 m) leads and Deutsch connectors
- ▶ (2) 30133-103 actuator extension wiring harnesses - 20' (6.1 m) length
- ▶ (2) 15085-001 upper mounting brackets with gland seal
- ▶ (2) 50014-001 lower mounting brackets
- ▶ Lenco owner's/installation manual
- ▶ Stainless steel mounting hardware



Retail Box
See check-list below



Standard Mount Trim Tab Kits - 12-Volt

Lenco Part#	L" X W"	Boat Length	Hinge Height	Min Transom Height	Retail Box
15000-101	9" X 9"	14' - 18'	2" (5.1 cm)	14" (35.6 cm)	✓
15001-101	9" X 12"	16' - 25'	2" (5.1 cm)	14" (35.6 cm)	✓
15002-101	9" X 18"	22' - 30'	2" (5.1 cm)	14" (35.6 cm)	
15003-101	9" X 24"	26' - 40'	1" (2.5 cm)	14" (35.6 cm)	
15004-101	9" X 30"	30' - 50'	1" (2.5 cm)	14" (35.6 cm)	
15005-101	9" X 36"	34' - 65'	1" (2.5 cm)	14" (35.6 cm)	
15007-101	12" X 12"	17' - 30'	2" (5.1 cm)	14" (35.6 cm)	✓
15008-101	12" X 18"	26' - 36'	2" (5.1 cm)	14" (35.6 cm)	
15009-101	12" X 24"	30' - 44'	1" (2.5 cm)	14" (35.6 cm)	
15010-101	12" X 30"	34' - 54'	1" (2.5 cm)	14" (35.6 cm)	
15011-101	12" X 36"	38' - 69'	1" (2.5 cm)	14" (35.6 cm)	

SWITCH KITS SOLD SEPARATELY

See page 20 through 21.

Electro-Polished Standard Mount Trim Tab Kits

12-Volt

All the same features of the Standard Mount series with the addition of Electro-Polished blades. Electro-Polish adds a mirror finish and the ultimate corrosion protection. Boat lengths 16' (4.9 m) to 30' (9.1 m).

NEW!



15113-101

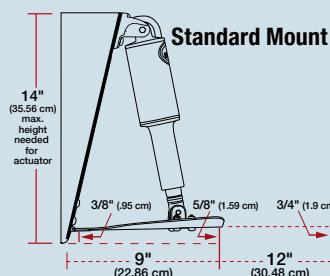


Blades are constructed of Electro-Polished 12 gauge (2.7 mm) laser cut 304 stainless steel with a 5/8" (1.6 cm) flared trailing edge & 1/8" (3.2 mm) diameter hinge pin. Upper and lower high impact corrosion proof mounting brackets with mechanical cable gland seal.



Kits include:

- ▶ (2) 12-gauge stainless steel Electro-Polished blades
- ▶ (2) 15054-001 actuators with 6' (1.8 m) leads and Deutsch connectors
- ▶ (2) 30133-103 actuator extension wiring harnesses - 20' (6.1 m) length
- ▶ (2) 15085-001 upper mounting brackets with gland seal
- ▶ (2) 50014-001 lower mounting brackets
- ▶ Lenco owner's/installation manual
- ▶ Stainless steel mounting hardware



Retail Box
See check-list below

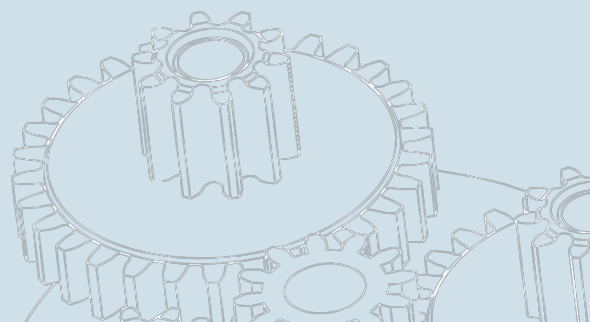


Standard Mount Electro-Polished Trim Tab Kits - 12-Volt

Lenco Part#	L" X W"	Boat Length	Hinge Height	Min Transom Height	Retail Box
15113-101	9" X 12"	16' - 25'	2" (5.1 cm)	14" (35.6 cm)	✓
15114-101	12" X 12"	17' - 30'	2" (5.1 cm)	14" (35.6 cm)	✓

SWITCH KITS SOLD SEPARATELY

See page 20 through 21.



Edge Mount Trim Tab Kits

12-Volt

Designed for boat applications where a lower actuator mounting height is desirable. Actuator mounts at the trailing edge of the blade giving it a 1/2" (1.3 cm) lower mounting height on 9" (22.9 cm) long blades & 3" (7.6 cm) lower mounting height on 12" (30.5 cm) long blades. All edges are turned up for added strength and style. Boat lengths 14' (4.3 m) to 36' (11 m).



15016-101

Blades are constructed of 12 gauge (2.7 mm) laser cut 304 stainless steel with 1" (2.5 cm) turned up edges and a 5 degree taper on both sides to the trailing edge, & 1/8" (3.2 mm) diameter hinge pin. Upper and lower high impact corrosion proof mounting brackets with mechanical cable gland seal.

Kits include:

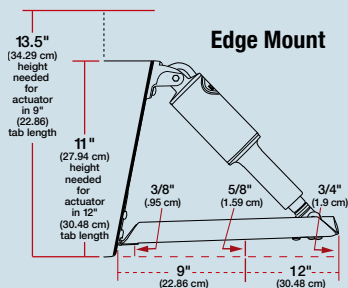
- ▶ (2) 12-gauge stainless steel standard finish blades
- ▶ (2) 15054-001 actuators with 6' (1.8 m) leads and Deutsch connectors
- ▶ (2) 30133-103 actuator extension wiring harnesses - 20' (6.1 m) length
- ▶ (2) 15085-001 upper mounting brackets with gland seal
- ▶ (2) 50014-001 lower mounting brackets
- ▶ Lenco owner's/installation manual
- ▶ Stainless steel mounting hardware



SIZE DESCRIPTION

(L) = Length of tab
(W) = Width of hinge

Size description to be used with chart below.



Edge Mount

Retail Box

See check-list below



Edge Mount Trim Tab Kits - 12-volt

Lenco Part#	L" X W"	Boat Length	Hinge Height	Min. Transom Height	Retail Box
15013-101	9" X 9"	14' - 18'	2" (5.1 cm)	13.5" (34.3 cm)	✓
15014-101	9" X 12"	16' - 25'	2" (5.1 cm)	13.5" (34.3 cm)	✓
15015-101	12" X 9"	14' - 18'	2" (5.1 cm)	11" (27.9 cm)	✓
15016-101	12" X 12"	17' - 30'	2" (5.1 cm)	11" (27.9 cm)	✓
15017-101	12" X 18"	26' - 36'	2" (5.1 cm)	11" (27.9 cm)	

SWITCH KITS SOLD SEPARATELY

See page 20 through 21.

Electro-Polished Edge Mount Trim Tab Kits

12-Volt

All the same features of the Edge Mount series with the addition of Electro-Polished blades. Electro-Polish adds a mirror finish and the ultimate corrosion protection. Actuator mounts at the trailing edge of these 12" (30.5 cm) blades giving them a 3" (7.6 cm) lower mounting height. Boat Lengths 14' (4.3 m) to 30' (9.1 m).



15116-101

Blades are constructed of Electro-Polished 12 gauge (2.7 mm) laser cut 304 stainless steel with a 1" (2.5 cm) turned up edges and a 5 degree taper on both sides to the trailing edge & 1/8" (3.2 mm) diameter hinge pin. Upper and lower high impact corrosion proof mounting brackets with mechanical cable gland seal.

Kits include:

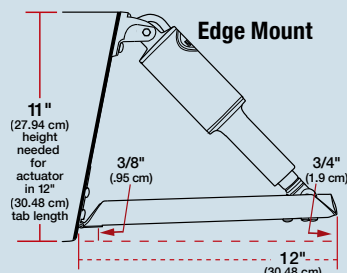
- ▶ (2) 12-gauge stainless steel Electro-Polished blades
- ▶ (2) 15054-001 actuators with 6' (1.8 m) leads and Deutsch connectors
- ▶ (2) 30133-103 actuator extension wiring harnesses - 20' (6.1 m) length
- ▶ (2) 15085-001 upper mounting brackets with gland seal
- ▶ (2) 50014-001 lower mounting brackets
- ▶ Lenco owner's/installation manual
- ▶ Stainless steel mounting hardware



SIZE DESCRIPTION

(L) = Length of tab
(W) = Width of hinge

Size description to be used with chart below.



Edge Mount

Retail Box

See check-list below



Edge Mount Electro-Polished Trim Tab Kits - 12-Volt

Lenco Part#	L" X W"	Boat Length	Hinge Height	Min Transom Height	Retail Box
15115-101	12" X 9"	14' - 18'	2" (5.1 cm)	11" (27.9 cm)	✓
15116-101	12" X 12"	17' - 30'	2" (5.1 cm)	11" (27.9 cm)	✓

SWITCH KITS SOLD SEPARATELY

See page 20 through 21.

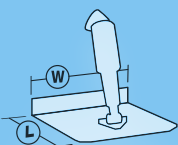
Complete Standard Trim Tab Kits

12-Volt

Everything you need in one box! The Standard trim tab kit with the added benefit of having your switch choice & power connector all included. Boat lengths 16' (4.9 m) to 30' (9.1 m).



Blades are constructed of 12 gauge (2.7 mm) laser cut 304 stainless steel with a 5/8" (1.6 cm) flared trailing edge & 1/8" (3.2 mm) diameter hinge pin. Upper and lower high impact corrosion proof mounting brackets with mechanical cable gland seal. Switch included.



SIZE DESCRIPTION

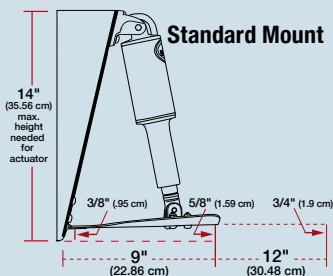
L = Length of tab

W = Width of hinge

Size description to be used with chart below.

Kits include:

- ▶ (1) Switch Kit - Choose Double Rocker, Standard or LED Indicator
- ▶ (2) 12-gauge stainless steel standard finish blades
- ▶ (2) 15054-001 actuators with 6' (1.8 m) leads and Deutsch connectors
- ▶ (2) 30133-103 actuator extension wiring harnesses - 20' (6.1 m) length
- ▶ (2) 15085-001 upper mounting brackets with gland seal
- ▶ (2) 50014-001 lower mounting brackets
- ▶ Lenco owner's/installation manual
- ▶ Stainless steel mounting hardware



Standard Mount

Retail Box
Packaged with all kits shown



Complete / Standard Mount Trim Tab Kits - 12-volt

Switch Kits Included

Lenco Part#	L" X W"	Kit Description	Switch Kit Included
15101-104	9" X 12"	Standard Trim Tab Kit	Double Rocker Switch
15104-102	9" X 12"	Standard Trim Tab Kit	Standard Tactile Switch
15108-103	9" X 12"	Standard Trim Tab Kit	LED Indicator Switch
15103-104	12" X 12"	Standard Trim Tab Kit	Double Rocker Switch
15105-102	12" X 12"	Standard Trim Tab Kit	Standard Tactile Switch
15109-103	12" X 12"	Standard Trim Tab Kit	LED Indicator Switch

Complete Edge Mount Trim Tab Kits

12-Volt

Everything you need in one box! The Edge Mount trim tab kit with the added benefit of having your switch choice & power connector all included. Boat lengths 17' (5.2 m) to 30' (9.1 m).



Blades are constructed of 12 gauge (2.7 mm) laser cut 304 stainless steel with a 1" (2.5 cm) turned up edges and a 5 degree taper on both sides to the trailing edge & 1/8" (3.2 mm) diameter hinge pin. Upper and lower high impact corrosion proof mounting brackets with mechanical cable gland seal. Switch included.



SIZE DESCRIPTION

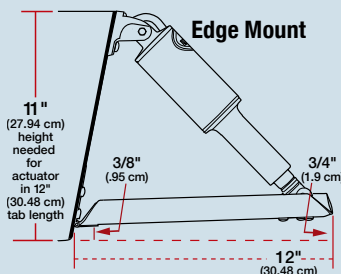
L = Length of tab

W = Width of hinge

Size description to be used with chart below.

Kits include:

- ▶ (1) Switch Kit - Choose Double Rocker, Standard or LED Indicator
- ▶ (2) 12-gauge stainless steel standard finish blades
- ▶ (2) 15054-001 actuators with 6' (1.8 m) leads and Deutsch connectors
- ▶ (2) 30133-103 actuator extension wiring harnesses - 20' (6.1 m) length
- ▶ (2) 15085-001 upper mounting brackets with gland seal
- ▶ (2) 50014-001 lower mounting brackets
- ▶ Lenco owner's/installation manual
- ▶ Stainless steel mounting hardware



Edge Mount

Retail Box
Packaged with all kits shown



Edge Mount Complete Trim Tab Kits - 12-volt

Switch Kits Included

Lenco Part#	L" X W"	Kit Description	Switch Kit Included
15102-104	12" X 12"	Edge Mount Trim Tab Kit	Double Rocker Switch
15106-102	12" X 12"	Edge Mount Trim Tab Kit	Standard Tactile Switch
15110-103	12" X 12"	Edge Mount Trim Tab Kit	LED Indicator Switch

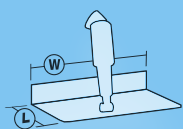
LS-Limited Space Trim Tab Kits

12-Volt TWO STYLES TO CHOOSE FROM

Engineered to fit behind ladders. This unique design gives you all the benefits of a standard tab in an ultra compact design. The folded over trailing edge ensures protection when boarding your boat. Boat lengths 14' (4.3 m) to 25' (7.6 m).



Blades are constructed of 12 gauge (2.7 mm) laser cut 304 stainless steel with a folded over trailing edge for safety, welded on lower mounting brackets & 1/8" (3.2 mm) diameter hinge pin. High impact corrosion proof upper mounting brackets with mechanical cable gland seal.



SIZE DESCRIPTION

L = Length of tab
W = Width of hinge

Size description to be used with chart below.

Kits include:

- ▶ (2) 12-gauge stainless steel blades with option of standard finish or Electro-Polish finish
- ▶ (2) actuators with 6' (1.8 m) lead and Deutsch connectors
- ▶ (2) 30133-103 actuator extension wiring harnesses - 20' (6.1 m) length
- ▶ (2) 15085-001 upper mounting brackets with gland seal
- ▶ Lower mounting brackets included
- ▶ Lenco owner's/installation manual
- ▶ Stainless steel mounting hardware



LS-Limited Space Trim Tab Kits - 12-volt

Lenco Part#	L" X W"	Min. Transom Height	Actuators In Kit	Blade Finish
15125-101	4" X 12"	14.5" (36.8 cm)	15054-001 Standard	Standard
15126-101	4" X 12"	14.5" (36.8 cm)	15054-001 Standard	EP
15052-101	4" X 12"	13" (33 cm)	15057-001 XDS	Standard
15088-101	4" X 12"	13" (33 cm)	15057-001 XDS	EP

SWITCH KITS SOLD SEPARATELY

See page 20 through 21.

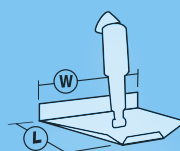
Airboat Trim Tab Kit

12-Volt

The world's first Airboat specific design. The planing surface provides greater lift and less drag. Engineered to prevent the tab from digging in during hard turns resulting in a safer ride.



Blade is constructed of 12 gauge (2.7 mm) laser cut 304 stainless steel with a welded on stainless steel adjustable lower actuator mounting bracket & 1/8" (3.2 mm) diameter hinge pin. High impact corrosion proof upper mounting bracket with mechanical cable gland seal.



SIZE DESCRIPTION

L = Length of tab
W = Width of hinge

Size description to be used with chart below.

Kit includes:

- ▶ (1) 12-gauge stainless steel standard finish blade with 2" (5.1 cm) hinge height
- ▶ (1) actuator with 6' (1.8 m) lead and Deutsch connector
- ▶ (1) 30133-002 actuator extension wiring harness - 14' (4.3 m) length
- ▶ (1) 15085-001 upper mounting bracket with gland seal
- ▶ Lower mounting bracket included
- ▶ Lenco owner's/installation manual
- ▶ Stainless steel mounting hardware

Airboat Trim Tab Kit - 12-Volt

Lenco Part#	L" X W"	Actuator In Kit	Description
15112-101	9" X 14"	15055-001	Airboat Kit without Switch

SPECIAL AIRBOAT SWITCH SOLD SEPARATELY



Airboat Trim Tab Switch

RECOMMENDED

Airboat Single Rocker Switch with Deutsch Recept. & (2) 30" (76.2 cm) Non-Terminated Power Leads - Clamshell Packaged

15095-001

Standard Performance Trim Tab Kits

12-Volt

Our first series designed specifically for performance. This system comes equipped with a thicker reinforced hinge and complimented with an Electro-Polished finish for added quality and protection. Boat lengths 13' (4 m) to 40' (12.2 m).



Electro-Polished
15037-101

Blades are constructed of Electro-Polished 12 gauge (2.7 mm) laser cut 304 stainless steel with 1" (2.5 cm) turned up edges and a 5 degree taper on the inside, heavy duty hinge with 1/4" (6.4 mm) diameter hinge pin. Upper and lower high impact corrosion proof mounting brackets with mechanical cable gland seal.

Kits include:

- ▶ (2) 12-gauge stainless steel Electro-Polished blades
- ▶ (2) 15054-001 actuators with 6' (1.8 m) leads & Deutsch connectors
- ▶ (2) 30133-103 actuator extension wiring harnesses - 20' (6.1 m) length
- ▶ (2) 15085-001 upper mounting brackets with gland seal
- ▶ (2) 50014-001 lower mounting brackets
- ▶ Lenco owner's/installation manual
- ▶ Stainless steel mounting hardware



SIZE DESCRIPTION

L = Length of tab
W = Width of hinge

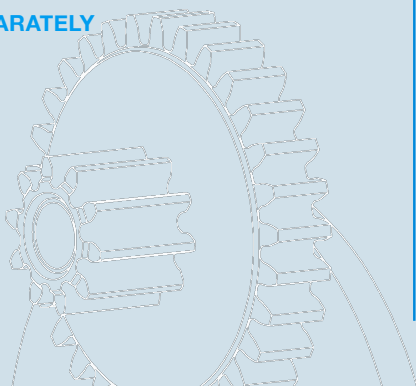
Size description to be used with chart below.

Standard Performance Trim Tab Kits - 12-volt

Lenco Part#	L" X W"	Boat Length	Min. Transom Height
15034-101	9" x 9"	13' - 20'	13.5" (34.3 cm)
15035-101	9" x 12"	16' - 26'	13.5" (34.3 cm)
15036-101	12" x 9"	16' - 26'	11" (27.9 cm)
15037-101	12" x 12"	18' - 32'	11" (27.9 cm)
15038-101	14" x 12"	19' - 34'	11" (27.9 cm)
15039-101	16" x 12"	20' - 36'	11" (27.9 cm)
15040-101	18" x 14"	22' - 40'	11" (27.9 cm)

SWITCH KITS SOLD SEPARATELY

See page 20 through 21.



Heavy Duty (HD) Performance Trim Tab Kits

12-Volt

The Heavy Duty series is designed and built for the boats that need extra strength to support them in rougher water at higher speeds. Boat lengths 18' (5.5 m) to 42' (12.8 m).

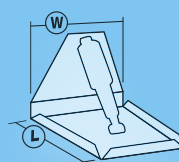


Electro-Polished
15043-101

Blades are constructed of Electro-Polished 12 gauge (2.7 mm) laser cut 304 stainless steel with 1" (2.5 cm) turned up edges and a 5 degree taper on the inside, heavy duty hinge with 1/4" (6.4 mm) diameter hinge pin. Full transom back plate with welded on stainless steel upper & adjustable lower actuator mounting brackets, 5/16 (.8 cm) stainless steel mounting bolts & mechanical strain-relief cable seals. 3.75" (9.5 cm) sacrificial anodes installed.

Kits include:

- ▶ (2) 12-gauge stainless steel Electro-Polished blades
- ▶ (2) 15055-001 XD Extreme Duty actuators with 6' (1.8 m) leads & Deutsch connectors
- ▶ (2) 30133-103 actuator extension wiring harnesses - 20' (6.1 m) length
- ▶ Lenco owner's/installation manual
- ▶ **Note:** Boat-mounting hardware to be supplied by the customer

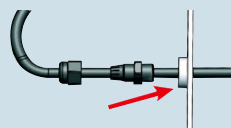
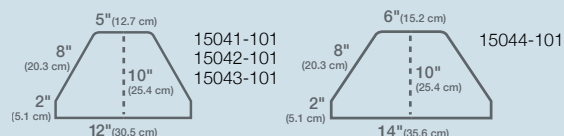


SIZE DESCRIPTION

L = Length of tab
W = Width of hinge

Size description to be used with chart below.

Back Plate Dimensions



The actuator leads pass through the water-tight mechanical strain-relief cable seal and the back plate before passing through the transom. This applies to all products with back plates.

Heavy Duty (HD) Performance Trim Tab Kits - 12-volt

Lenco Part#	L" X W"	Boat Length	Min. Transom Height
15041-101	12" X 12"	18' - 34'	10.5" (26.7 cm)
15042-101	14" X 12"	19' - 36'	10.5" (26.7 cm)
15043-101	16" X 12"	20' - 38'	10.5" (26.7 cm)
15044-101	18" X 14"	22' - 42'	10.5" (26.7 cm)

SWITCH KITS SOLD SEPARATELY

See page 20 through 21.

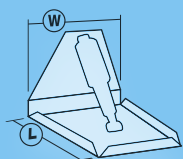
Extreme Duty (XD) Performance Trim Tab Kit 12-Volt / Single Actuator

The only single actuator Extreme Duty design offered. This kit is similar to our Heavy Duty Performance series with a thicker, stronger blade for those boaters who run hard in extreme conditions. Boat lengths 20' (6.1 m) to 40' (12.2 m).



Electro-Polished
15045-101

Blades are constructed of Electro-Polished 10 gauge (3.4 mm) laser cut 304 stainless steel with 1" (2.5 cm) turned up edges and a 5 degree taper on the inside, heavy duty hinge with 3/8" (9.5 mm) diameter hinge pin. Full transom back plate with mechanical strain-relief cable seals, welded on stainless steel upper & adjustable lower actuator mounting brackets, 3/8" (9.5 mm) stainless steel mounting bolts. 3.75" (9.5 cm) sacrificial anodes installed.



SIZE DESCRIPTION

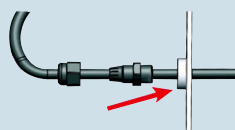
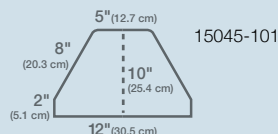
L = Length of tab
W = Width of hinge

Size description to be used with chart below.

Kit includes:

- ▶ (2) 10-gauge stainless steel Electro-Polished blades
- ▶ (2) 15056-001 XD Extreme Duty actuators with 6' (1.8 m) leads & Deutsch connectors
- ▶ Lenco owner's/installation manual
- ▶ **Note:** Boat-mounting hardware to be supplied by the customer
- ▶ **Note:** Actuator extension harnesses not in kits, must be purchased separately (2 required) see page 32

Back Plate Dimensions



The actuator leads pass through the water-tight mechanical strain-relief cable seal and the back plate before passing through the transom. This applies to all products with back plates.

Extreme Duty (XD) Performance Trim Tab Kit - 12-volt Single Actuator Kit

Lenco Part#	L" X W"	Boat Length	Min. Transom Height
15045-101	17" x 12"	20' - 40'	10.5" (26.7 cm)

SWITCH KITS SOLD SEPARATELY

See page 20 through 21.

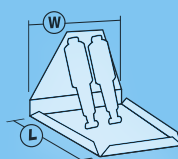
Extreme Duty (XD) Performance Trim Tab Kits 12-Volt / Dual Actuator

All the robust features of our single actuator XD series with twice the actuator power for larger, faster boats that don't back away from rough conditions. Boat lengths 23' (7 m) to 50' (15.2 m).



Electro-Polished
15046-101

Blades are constructed of Electro-Polished 10 gauge (3.4 mm) laser cut 304 stainless steel with 1" (2.5 cm) turned up edges and a 5 degree taper on the inside, heavy duty hinge with 3/8" (9.5 mm) diameter hinge pin. Full transom back plate with mechanical strain-relief cable seals, welded on stainless steel upper & adjustable lower actuator mounting brackets, 3/8" (9.5 mm) stainless steel mounting bolts. 3.75" (9.5 cm) sacrificial anodes installed.



SIZE DESCRIPTION

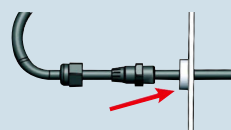
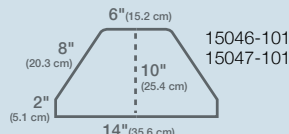
L = Length of tab
W = Width of hinge

Size description to be used with chart below.

Kits include:

- ▶ (2) 10-gauge stainless steel Electro-Polished blades
- ▶ (4) 15056-001 XD Extreme Duty actuators with 6' (1.8 m) leads & Deutsch connectors
- ▶ Lenco owner's/installation manual
- ▶ **Note:** Boat-mounting hardware to be supplied by the customer
- ▶ **Note:** Actuator extension harnesses not in kits, must be purchased separately (4 required) see page 32

Back Plate Dimensions



The actuator leads pass through the water-tight mechanical strain-relief cable seal and the back plate before passing through the transom. This applies to all products with back plates.

Extreme Duty (XD) Performance Trim Tab Kits - 12-volt Dual Actuator Kits

Lenco Part#	L" X W"	Boat Length	Min. Transom Height
15046-101	19" x 14"	23' - 45'	10.5" (26.7 cm)
15047-101	24" x 14"	25' - 50'	10.5" (26.7 cm)

SWITCH KIT SOLD SEPARATELY

See page 20 for Switch Kit 15071-001.

High Performance (HP) Trim Tab Kits

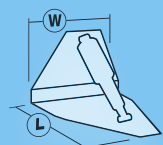
12-Volt / Single Actuator

This powerful, unique series is designed for multiple engine applications with limited transom space. The contoured blade design allows extra space for engines to turn while reducing cavitation to the props. Boat lengths 16' (4.9 m) to 40' (12.2 m).



Electro-Polished
15049-101

Blades are constructed of Electro-Polished 7 gauge (4.6 mm) laser cut 304 stainless steel with heavy duty hinge with 3/8" (9.5 mm) diameter hinge pin. Full transom back plate with mechanical strain-relief cable seals, welded on stainless steel upper & adjustable lower actuator mounting brackets, 3/8" (9.5 mm) stainless steel mounting bolts. 3.75" (9.5 cm) sacrificial anodes installed.



SIZE DESCRIPTION

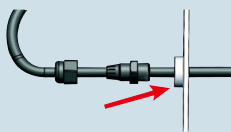
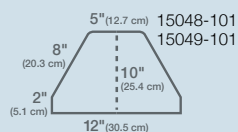
L = Length of tab
W = Width of hinge

Size description to be used with chart below.

Kits include:

- ▶ (2) 7-gauge stainless steel Electro-Polished blades
- ▶ (2) 15056-001 XD Extreme Duty actuators with 6' (1.8 m) leads & Deutsch connectors
- ▶ Lenco owner's/installation manual
- ▶ **Note:** Boat-mounting hardware to be supplied by the customer
- ▶ **Note:** Actuator extension harnesses not in kits, must be purchased separately (2 required) see page 32

Back Plate Dimensions



The actuator leads pass through the water-tight mechanical strain-relief cable seal and the back plate before passing through the transom. This applies to all products with back plates.

High Performance Trim Tab Kits - 12-volt Single Actuator Kits

Lenco Part#	L" X W"	Boat Length	Min. Transom Height
15048-101	14" x 12"	16' - 32'	10.5" (26.7 cm)
15049-101	18" x 12"	20' - 40'	10.5" (26.7 cm)

SWITCH KITS SOLD SEPARATELY

See page 20 through 21.

High Performance (HP) Trim Tab Kits

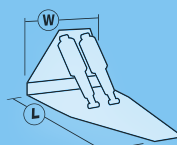
12-Volt / Dual Actuator

Same powerful features and unique blade design as the single HP series with double the actuator support for larger, faster boats. Boat lengths 24' (7.3 m) to 52' (15.8 m).



Electro-Polished
15051-101

Blades are constructed of Electro-Polished 7 gauge (4.6 mm) laser cut 304 stainless steel, heavy duty hinge with 3/8" (9.5 mm) diameter hinge pin. Full transom back plate with mechanical strain-relief cable seals, welded on stainless steel upper & adjustable lower actuator mounting brackets, 3/8" (9.5 mm) stainless steel mounting bolts. 3.75" (9.5 cm) sacrificial anodes installed.



SIZE DESCRIPTION

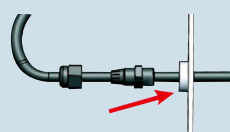
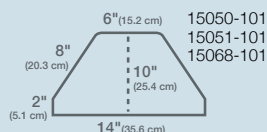
L = Length of tab
W = Width of hinge

Size description to be used with chart below.

Kits include:

- ▶ (2) 7-gauge stainless steel Electro-Polished blades
- ▶ (4) 15056-001 XD Extreme Duty actuators with 6' (1.8 m) leads & Deutsch connectors
- ▶ Lenco owner's/installation manual
- ▶ **Note:** Boat-mounting hardware to be supplied by the customer
- ▶ **Note:** Actuator extension harnesses not in kits, must be purchased separately (4 required) see page 32

Back Plate Dimensions



The actuator leads pass through the water-tight mechanical strain-relief cable seal and the back plate before passing through the transom. This applies to all products with back plates.

High Performance Trim Tab Kits - 12-volt Dual Actuator Kits

Lenco Part#	L" X W"	Boat Length	Min. Transom Height
15050-101	21" x 14"	24' - 42'	10.5" (26.7 cm)
15051-101	25" x 14"	28' - 46'	10.5" (26.7 cm)
15068-101	29" x 14"	30' - 52'	10.5" (26.7 cm)

SWITCH KIT SOLD SEPARATELY

See page 20 for Switch Kit 15071-001.

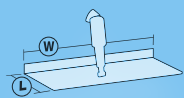
Super Strong Trim Tab Kits

12 & 24-Volt / Single Actuator

This Super Strong design is for sport fishing, large cruising and commercial vessels. This series has a completely flat blade design which reduces spray giving you a clean, dry ride. Boat lengths 24' (7.3 m) to 52' (15.8 m).



Blades are constructed of 7 gauge (4.6 mm) laser cut 304 stainless steel with 3/8 (9.5 mm) diameter hinge pin. High impact corrosion proof upper mounting brackets with mechanical gland cable seal and stainless steel welded on lower brackets, 5/16" (.8 cm) upper and 3/8" (9.5 mm) lower stainless steel mounting bolts. 3.75" (9.5 cm) sacrificial anodes installed.



SIZE DESCRIPTION

(L) = Length of tab
(W) = Width of hinge
Size description to be used with chart below.

Kits include:

- ▶ (2) 7-gauge stainless steel standard finish blades
- ▶ (2) 15056-002 12-Volt (15063-002 for 24-Volt) XD Extreme Duty actuators with 6' (1.8 m) & Deutsch connectors
- ▶ Lenco owner's/installation manual
- ▶ Stainless steel mounting hardware
- ▶ **Note:** Actuator extension harnesses not in kits, must be purchased separately (2 required) see page 32

Super Strong Single Actuator Trim Tab Kits

Single Actuator System - 12-Volt

Lenco Part#	L" X W"	Boat Length	Recommended Switch
15018-101	12" x 18"	24' - 40'	15069-001 or 15070-001
15019-101	12" x 24"	27' - 44'	15069-001 or 15070-001
15020-101	12" x 30"	30' - 48'	15069-001 or 15070-001
15021-101	12" x 36"	33' - 52'	15069-001 or 15070-001

Single Actuator System - 24-Volt

Lenco Part#	L" X W"	Boat Length	Recommended Switch
15026-101	12" x 18"	24' - 40'	15070-001
15027-101	12" x 24"	27' - 44'	15070-001
15028-101	12" x 30"	30' - 48'	15070-001
15029-101	12" x 36"	33' - 52'	15070-001

SWITCH KITS SOLD SEPARATELY

See page 20 through 21.

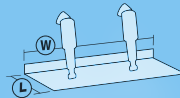
Super Strong Trim Tab Kits

12 & 24-Volt / Dual Actuator

Offering the same features as our single system, this series gives you a longer blade design with dual actuator support for those large vessels needing that extra lift. Boat lengths 35' (10.6 m) to 80' (24.4 m).



Blades are constructed of 7 gauge (4.6 mm) laser cut 304 stainless steel with 3/8 (9.5 mm) diameter hinge pin. High impact corrosion proof upper mounting brackets with mechanical gland cable seal and stainless steel welded on lower brackets, 5/16" (.8 cm) upper and 3/8" (9.5 mm) lower stainless steel mounting bolts. 3.75" (9.5 cm) sacrificial anodes installed.



SIZE DESCRIPTION

(L) = Length of tab
(W) = Width of hinge
Size description to be used with chart below.

Kits include:

- ▶ (2) 7-gauge stainless steel standard finish blades
- ▶ (4) 15056-002 12-Volt (15063-002 for 24-Volt) XD Extreme Duty actuators with 6' (1.8 m) & Deutsch connectors
- ▶ Lenco owner's/installation manual
- ▶ Stainless steel mounting hardware
- ▶ **Note:** Actuator extension harnesses not in kits, must be purchased separately (4 required) see page 32

Super Strong Dual Actuator Trim Tab Kits

Dual Actuator System - 12-Volt

Lenco Part#	L" X W"	Boat Length	Recommended Switch
15022-101	16" x 24"	35' - 50'	15071-001
15023-101	16" x 30"	40' - 60'	15071-001
15024-101	16" x 36"	45' - 70'	15071-001
15025-101	16" x 42"	50' - 80'	15071-001

Dual Actuator System - 24-Volt

Lenco Part#	L" X W"	Boat Length	Recommended Switch
15030-101	16" x 24"	35' - 50'	15071-001
15031-101	16" x 30"	40' - 60'	15071-001
15032-101	16" x 36"	45' - 70'	15071-001
15033-101	16" x 42"	50' - 80'	15071-001

SWITCH KIT SOLD SEPARATELY

See page 20 for Switch Kit 15071-001.



Scan QR code
or visit us at
lencomarine.com





LENCO SWITCH KITS

Lenco's tactile switches are the most innovative switches on the market today. With a solid state design there are no moving parts guaranteeing years of dependable performance. These switches provide an instant response at the touch of a button allowing customers to position and balance their boat with ease. Completely waterproof with an over molded design, our switches are built to last for years to come.



INSTANT
RESPONSE



100%
ELECTRIC



PLUG
& PLAY



PRODUCT
CERTIFIED



WE MAKE THE BEST BOATS BETTER!

LED Indicator Tactile Switch Kits 12 & 24-Volt / Single Actuator



15070-001

For 12 and 24-volt single actuator systems. Complete your trim tab system with the latest switch technology — totally waterproof, maintenance-free tactile switches.

Features Include:

- ▶ Simple, quick, Plug & Play installation
- ▶ Built-in retractor
- ▶ Solid state electronics
- ▶ Low profile design
- ▶ Self-contained, sealed key pad & solid state control box with waterproof Plug & Play Deutsch connectors
- ▶ 36" (91.4 cm) power pigtail for control box
- ▶ 2" (5.1 cm) hole cut-out size, overall size of key pad is 2.75" (7 cm) x 2.75" (7 cm)
- ▶ 2 high-intensity LED Indicator displays show the exact position of your trim tabs at all times
- ▶ Photo Eye for optimum viewing in all light conditions
- ▶ Backlit key pad for optimum viewing at night
- ▶ Self-Check feature
- ▶ For 12- or 24-volt applications

Complete LED Indicator Tactile Switch Kit For Single Actuator Systems

Lenco Part #	Lenco Model #	Description
15070-001	123SC	Tactile Trim Tab Switch Kit w/LED Indicator, Retractor, Self-Check, Key Pad, Control Box with 36" (91.4 cm) Power Pigtail
Replacement Parts		
30072-001	123SCCB	Control Box Only for #123SC Indicator Switch with Retractor, Self-Check
30140-001D		36" (91.4 cm) Power Pigtail for #122, 124SSR & 123SC (14-AWG wires with DTP plug)
30007-001D	123FP	Key Pad for all Indicator Trim Tab Switches (w/nylon nuts)



Retail Box
Used in conjunction
with this kit.

LED Indicator Tactile Switch Kits 12 & 24-Volt / Dual Actuator



15071-001

For 12 and 24-volt dual actuator systems. Complete your trim tab system with the latest switch technology — totally waterproof, maintenance-free tactile switches.

Features Include:

- ▶ Simple, quick, Plug & Play installation
- ▶ Built-in retractor
- ▶ Solid state electronics
- ▶ Low profile design
- ▶ Self-contained, sealed key pad & solid state control box with waterproof Plug & Play Deutsch connectors
- ▶ 72" (1.8 m) power pigtail for control box
- ▶ 2" (5.1 cm) hole cut-out size, overall size of key pad is 2.75" (7 cm) x 2.75" (7 cm)
- ▶ 2 high-intensity LED Indicator displays show the exact position of your trim tabs at all times
- ▶ Photo Eye for optimum viewing in all light conditions
- ▶ Backlit key pad for optimum viewing at night
- ▶ For 12- or 24-volt applications

Complete Actuator LED Indicator Tactile Switch Kit For Dual Actuator Systems

Lenco Part #	Lenco Model #	Description
15071-001	123DR	Tactile Trim Tab Switch Kit w/LED Indicator, Retractor, Key Pad, Control Box with 72" (1.8 m) Power Pigtail
Replacement Parts		
30112-001	123DRCB	Control Box Only for #123DR Dual Actuator Indicator Trim Tab Switch,
10249-001		72" (1.8 m) Power Pigtail for #123DRCB Dual CB (10-AWG wires w/DTP plug)
30007-001D	123FP	Key Pad for all Indicator Trim Tab Switches (w/nylon nuts)



Retail Box
Used in conjunction
with this kit.

Standard Tactile Switch Kits

12-Volt / Single Actuator



15069-001

For 12-volt single actuator systems. Complete your trim tab system with the latest switch technology — totally waterproof, maintenance-free tactile switches.

Features Include:

- Simple, quick, Plug & Play installation
- Built-in retractor
- Solid state electronics
- Low profile design
- Self-contained, sealed key pad & solid state control box with waterproof Plug & Play Deutsch connectors
- 36" (91.4 cm) power pigtail for control box
- 2" (5.1 cm) hole cut-out size, overall size of key pad is 2.75" (7 cm) x 2.75" (7 cm)

Complete Standard Tactile Switch Kit

Lenco Part #	Lenco Model #	Description
15069-001	124SSR	Standard Tactile Trim Tab Switch Kit w/ Retractor, Key Pad, Control Box with 36" (91.4 cm) Power Pigtail
Replacement Parts		
30134-001	124SSRCB	Control Box Only for #124SSR Tactile Switch w/Retractor
30140-001D		36" (91.4 cm) Power Pigtail for #122, 124SSR, & 123SC (14-AWG wires w/ DTP plug)
30006-001D	124 FP	Key Pad for Standard Tactile Trim Tab Switches (w/nylon nuts)

Retail Box
Used in conjunction
with this kit.



Double Rocker Trim Tab Switch Kits

12 & 24-Volt / Single and Dual Actuator



10222-211D

Double Rocker Switch available for Standard Trim Tabs, Standard & HD Performance Tabs (single and dual actuator systems). Does not have our Retractor feature. Overall key pad size is 2.75" (7 cm) x 2.75" (7 cm). Key pad hole cut-out size is 2.25" (5.7 cm)

Kits include:

- 122 Carling Double Rocker Switch
- Plug & Play Deutsch connectors
- Mounting hardware
- Installation hardware included
- Clamshell packaged

Complete Double Rocker Switch Kit

For Single Actuator Systems

Lenco Part #	Description
10222-211D	#122 Carling Double Rocker Switch Kit, Deutsch-Connected with 36" (91.4 cm) Power Pigtail Installation hardware included
10222-201D	Same as above without 36" (91.4 cm) Power Pigtail
Replacement Parts	
30140-001D	36" (91.4 cm) Power Pigtail for #122, 124SSR & 123SC (14-AWG wires w/DTP plug)

Complete Double Rocker Switch Kit

For Dual Actuator Systems

10221-211D	Carling Double Rocker Switch Kit for Dual Actuator Systems, Deutsch-Connected with 36" (91.4 cm) Power Pigtail Installation hardware included
Replacement Parts	
30140-001D	36" (91.4 cm) Power Pigtail for #122, 124SSR & 123SC (14-AWG wires w/DTP plug)

Retail Clamshell
Used in conjunction
with these kits.





Scan QR code
or visit us at
lencomarine.com





LENCO HATCH LIFTS

Lenco's Electric Hatch Lifts are designed and built to meet the harsh demands of the marine industry. Built for power and durability using non-corrosive materials with an inline motor design, our hatch lifts are easy to install and will provide customers with years of trouble free performance.



INSTANT
RESPONSE



100%
ELECTRIC



PLUG
& PLAY



PRODUCT
CERTIFIED



made
in USA

WE MAKE THE BEST BOATS BETTER!

ELECTRIC HATCH LIFTS 12 & 24-Volt Models

12 and 24-Volt with 2' (61 cm) leads and deutsch connectors. Inline motor design delivers over 500 lbs. of force. Includes high impact, corrosion proof mounting brackets and stainless steel pull pins.



Hatch Lift Features:

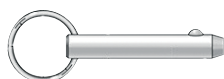
- **NEW** Clear anodized aluminum tubing
- Sizes 4" (10.1 cm) through 30" (76.2) stroke and available in 12 & 24-volt
- Complete with 2' (61 cm) lead and Deutsch plug (see actuator extension harnesses on page 32)
- Clutchless ball screw design will not drift, never binds and runs in sync on dual lift applications
- Inline motor design delivers over 500 lbs. (226.79 Kg) of force
- Waterproof and made entirely of non-corrosive materials
- Ball screw spins freely when hatch is fully opened or closed eliminating limit switches and burned out motors
- High impact, corrosion proof mounting brackets with stainless steel pull pins
- Powdered metal gears for strength and precision
- Stainless steel ram locks in any position
- CE-certified and ABYC compliant

OPTIONAL HATCH LIFT ACCESSORIES AVAILABLE



Optional stainless steel non-locking slide bracket for hatch lifts. In case of power failure, this bracket allows you to pull the hatch open a minimum of 5" (12.7 cm) in order to remove bolt for access.

70381-001



Stainless Steel Pull Pin
Clamshell packaged
60101-001D



Single Rocker Switch for hatch lifts with two 30" (76.2 cm) non-terminated power leads.

For Single hatch lift applications
Clamshell packaged
15096-001

For Dual hatch lift applications
Clamshell packaged
15098-001

Lenco Electric Hatch Lifts

L.O.A. = Length overall, measuring from top bracket to bottom bracket

12-Volt Models

Lenco Part#	Superseded Part#	L.O.A. Retracted	Approximate Stroke	L.O.A. Extended
20760-001	HL-400	15" (38.1 cm)	4" (10.1 cm)	19" (48.3 cm)
20762-001	HL-600	20" (50.8 cm)	6" (15.2 cm)	26" (66.0 cm)
20764-001	HL-800S	20" (50.8 cm)	8" (20.3 cm)	28" (71.1 cm)
20766-001	HL-800	24" (60.9 cm)	8" (20.3 cm)	32" (81.2 cm)
20768-001	HL-1200S	24" (60.9 cm)	12" (30.5 cm)	36" (91.4 cm)
20770-001	HL-1200	29" (73.7 cm)	12" (30.5 cm)	41" (104 cm)
20774-001	HL-1600S	29" (73.7 cm)	16" (40.6 cm)	45" (114 cm)
20776-001	HL-1600	33" (83.8 cm)	16" (40.6 cm)	49" (124 cm)
20778-001	HL-2000S	33" (83.8 cm)	20" (50.8 cm)	53" (134 cm)
20780-001	HL-2000	37" (93.9 cm)	20" (50.8 cm)	57" (144 cm)
20782-001	HL-2400S	37" (93.9 cm)	24" (60.9 cm)	61" (154 cm)
20784-001	HL-2400	41" (104 cm)	24" (60.9 cm)	65" (165 cm)
20786-001	HL-2600	47" (119 cm)	26" (66.0 cm)	73" (185 cm)
20788-001	HL-3000	47" (119 cm)	30" (76.2 cm)	77" (195 cm)

24-Volt Models

20761-001	HL-400/24V	15" (38.1 cm)	4" (10.1 cm)	19" (48.3 cm)
20763-001	HL-600/24V	20" (50.8 cm)	6" (15.2 cm)	26" (66.0 cm)
20765-001	HL-800S/24V	20" (50.8 cm)	8" (20.3 cm)	28" (71.1 cm)
20767-001	HL-800/24V	24" (60.9 cm)	8" (20.3 cm)	32" (81.2 cm)
20769-001	HL-1200S/24V	24" (60.9 cm)	12" (30.5 cm)	36" (91.4 cm)
20771-001	HL-1200/24V	29" (73.7 cm)	12" (30.5 cm)	41" (104 cm)
20775-001	HL-1600S/24V	29" (73.7 cm)	16" (40.6 cm)	45" (114 cm)
20777-001	HL-1600/24V	33" (83.8 cm)	16" (40.6 cm)	49" (124 cm)
20779-001	HL-2000S/24V	33" (83.8 cm)	20" (50.8 cm)	53" (134 cm)
20781-001	HL-2000/24V	37" (93.9 cm)	20" (50.8 cm)	57" (144 cm)
20783-001	HL-2400S/24V	37" (93.9 cm)	24" (60.9 cm)	61" (154 cm)
20785-001	HL-2400/24V	41" (104 cm)	24" (60.9 cm)	65" (165 cm)
20787-001	HL-2600/24V	47" (119 cm)	26" (66.0 cm)	73" (185 cm)
20789-001	HL-3000/24V	47" (119 cm)	30" (76.2 cm)	77" (195 cm)



Scan QR code
or visit us at
lencomarine.com





ACTUATORS & ACCESSORIES

The Lenco electric actuator is the signature product of our company. We have hand built in excess of 1 million actuators since 1986. Our actuators undergo extensive design and testing to ensure we continue to meet the increasing and challenging demands of the marine industry. Our instant response feature is why Lenco Trim Tabs have become the number one choice for boaters around the world. Lenco makes it simple to convert your slow hydraulic system to Lenco's instant response electric actuators without having to change out your entire system.



INSTANT
RESPONSE



100%
ELECTRIC



PLUG
& PLAY



PRODUCT
CERTIFIED



made
in USA

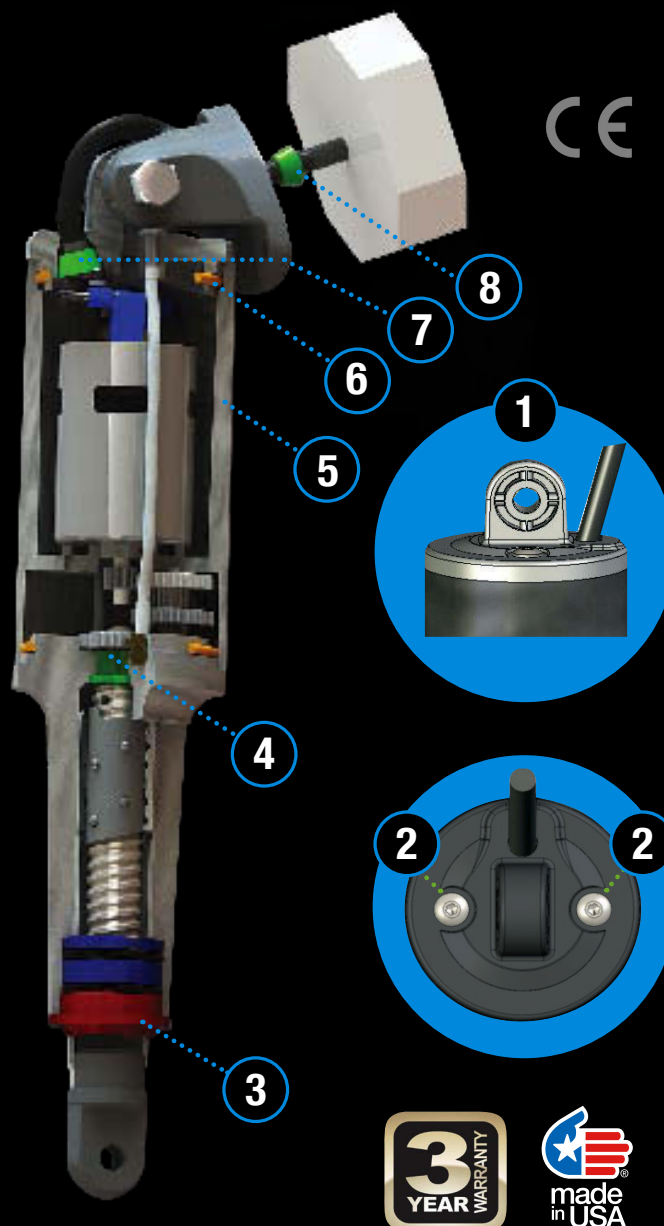
WE MAKE THE BEST BOATS BETTER!

LENCO ELECTRIC ACTUATORS

INSTANT RESPONSE ELECTRIC ACTUATORS ARE MADE OF HIGH IMPACT GLASS FIBER FILLED, ULTRAVIOLET-RESISTANT NYLON MATERIAL WITH 316 SUPER BUFF STAINLESS STEEL TUBING.

► OUR IMPROVED ACTUATORS

- 1 Stronger top cap and mounting clevis design.
- 2 New & improved pressure-tight torx screws.
- 3 Integrated wiper seal at actuator base.
- 4 Molded-in brass thrust bearing design.
- 5 Thicker and stronger motor housing wall.
- 6 Improved O-Ring design for a more consistent seal.
- 7 Over-molded cable providing a stronger tighter seal.
- 8 Upper mounting bracket w/ gland seal.



► FEATURES

Lenco's ballscrew design is more reliable and twice as powerful compared to typical hydraulics.

Lenco's tough, high-torque actuator motor easily pushes 750 lbs. (340 kg) Available in 12 or 24-Volts.

Lenco Actuator connections use waterproof "Plug & Play" Deutsch connectors eliminating the possibility of water intrusion.



ELECTRIC ACTUATORS 12 & 24-Volt Models

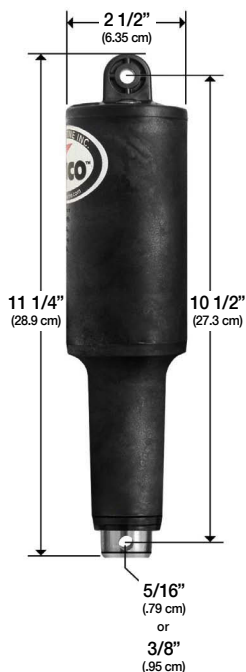


101 Standard Actuator
2 1/4" Stroke (5.715 cm)

The 101 Actuator is used in all Standard, Edge Mount and Standard Performance kits. 2 1/4" stroke - Overall length tip to tip = 12 1/8 inches.

15054-001
(12-volt actuator with 5/16" mounting hardware with 6' cable)

15061-001
(24-volt actuator 5/16" mounting hardware with 6' cable)



101 XD Actuator
2 1/4" Stroke (5.715 cm)

The 101 XD Actuator is used mostly with HD, XD, High Performance & Super Strong tabs. 2 1/4" stroke Overall length tip to tip = 11 3/8 inches.

15055-001
(12-volt, 5/16" mounting hardware with 6' cable)

15062-001
(24-volt, 5/16" mounting hardware with 6' cable)

15056-001
(12-volt, 3/8" mounting hardware with 6' cable)

15063-001
(24-volt, 3/8" mounting hardware with 6' cable)

15056-002
(12-volt, 5/16" upper & 3/8" lower mounting hardware with 6' cable)

15063-002
(24-volt, 5/16" upper & 3/8" lower mounting hardware with 6' cable)



101 XDS (Short) Actuator
2 1/4" Stroke (5.715 cm)

The 101 XDS Actuator is used with OEM specific kits & limited space applications; it is the shortest actuator we manufacture. 2 1/4" stroke - Overall length tip to tip = 10 7/8 inches

15057-001
(12-volt, 5/16" mounting hardware with 6' cable)

15058-001
(12-volt, 3/8" mounting hardware with 6' cable)



102 Actuator
4 1/4" Stroke (10.795 cm)

The 102 Actuator is used with Trolling Tab systems sold prior to 2000 and OEM applications. 4 1/4" stroke. Overall length tip to tip = 14".

15059-001
(12-volt, 5/16" mounting hardware with 6' cable)

15066-001
(24-volt, 5/16" mounting hardware with 6' cable)



102 XD Actuator
4 1/4" Stroke (10.795 cm)

The 102 XD Actuator is used with Trolling Tab systems sold prior to 2000 and OEM applications. 4 1/4" stroke Overall length tip to tip = 12 7/8 inches

15060-001
(12-volt, 5/16" mounting hardware with 6' cable)

15067-001
(24-volt, 5/16" mounting hardware with 6' cable)



Scan QR code
or visit us at
lencomarine.com



Replacement Actuators are packaged with Deutsch connectors and all stainless steel mounting hardware.
The entire Actuator is fully submersible, maintenance-free and sealed for life with a 3 year warranty.



Bennett Hydraulic-to-Lenco Electric

CONVERSION & PERFORMANCE UPGRADE KIT

No more replacing unreliable hydraulic pump units.



Use existing Bennett trim blades and hinges.

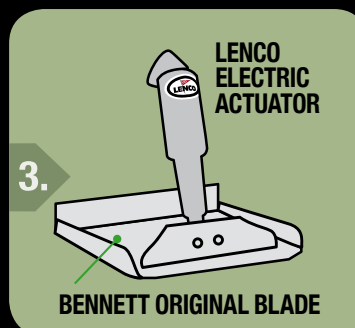
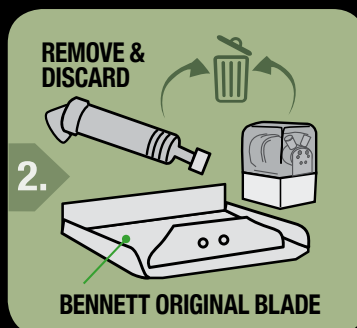
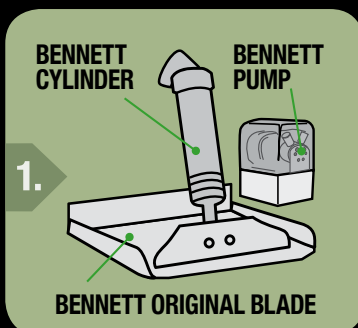


- ▶ Upgrade to our instant response electric actuators
- ▶ Improved boat performance
- ▶ Eliminate messy hydraulic pump unit
- ▶ Use your existing Bennett trim blades
- ▶ No new holes to drill
- ▶ Retrofits other hydraulic systems with minor modifications



Now you don't have to buy a new boat or an entire new set of trim tabs to get all the advantages of the latest in trim tab technology. Lenco's high-performance instant response actuators are now available to retro fit any boat equipped with the standard length Bennett hydraulic cylinders.

Scan QR code
or visit us at
lencomarine.com



This simple Conversion & Performance Upgrade Kit includes everything necessary to upgrade your current boat without any drilling or filling of holes. You simply discard the hydraulic pump unit and the two Bennett cylinders. Lenco's new upper mounting brackets fit the existing Bennett mounting holes on the transom. Install the two Lenco electric actuators on your existing Bennett trim blades using the existing lower actuator brackets. Connect our actuator wiring to the existing harness. Jumper wires are included for attaching to current Bennett rocker switch or you may also complement your upgrade kit by adding any Lenco switch kit including the Auto Glide system.

Lenco Part # Description

15064-001	12-Volt Aftermarket (BRK) Conversion Kit
15065-001	24-Volt Aftermarket (BRK) Conversion Kit



INSTANT
RESPONSE



FUEL
EFFICIENT



100%
ELECTRIC



ECO
FRIENDLY



AUTO GLIDE
COMPATIBLE



Retail Box



AUTO GLIDE™ Adapter Cables

Thumbnail Image	Lenco Part #	Description
	30246-001D	ADAPTER CABLE FOR SMARTCRAFT / MERCURY - 2.5' (76.2 cm)
	30252-001D	ADAPTER CABLE FOR COMMAND LINK / YAMAHA - 2.5' (76.2 cm)
	30277-001D	ADAPTER CABLE FOR J1939 - 2.5' (76.2 cm)
	30259-001D	CAN bus # 1 NMEA 2000 CABLE - 2.5' (76.2 cm)
	30257-001D	CAN bus # 2 GPS / NMEA 2000 GPS ADAPTER - 2.5' (76.2 cm) Use when connecting to NMEA 2000 GPS Antenna / Receiver.



30260 Series Extension Cables for Engine Adapter Cable, CAN 1 & CAN 2 are terminated with 4 pin male to 4 pin female Deutsch connectors

	30260-001D	5' (1.5 m) Extension Cable - Deutsch connectors
	30260-002D	10' (3 m) Extension Cable - Deutsch connectors
	30260-003	20' (6.1 m) Extension Cable - Deutsch connectors
	30260-004	30' (9.1 m) Extension Cable - Deutsch connectors
	30260-005	40' (12.2 m) Extension Cable - Deutsch connectors
	30260-006	50' (15.2 m) Extension Cable - Deutsch connectors
	30262-001D	CAN bus # 2 GPS / NMEA 2000 NETWORK ADAPTER CABLE ASSEMBLY - 2.5' Use when connecting to NMEA 2000 Network (For longer lengths, use GPS vendor's extension or # 30269-001D.)

AUTO GLIDE™ NMEA 2000 Network Accessories

Thumbnail Image	Lenco Part #	Description
	11201-001	NMEA 2000 NETWORK KIT Contents: (1) Power Cable, (5) Tee Connectors and (1) Male / (1) Female Resistor
	30267-001D	TEE CONNECTOR ONLY
	30268-001D	FEMALE TERMINATING RESISTOR 120 ohm
	30268-002D	MALE TERMINATING RESISTOR 120 ohm
	30281-001D	POWER CABLE NMEA 2000 NETWORK - 2.5' (76.2 cm)





AUTO GLIDE™ 2nd Station Kits

Thumbnail Image	Lenco Part #	Description
All (5) Kits seen here include key pad, splitter connector and extension cable		
	11202-001	2ND STATION KIT with 10' (3 m) Extension Cable
	11202-002	2ND STATION KIT with 20' (6.1 m) Extension Cable
	11202-003	2ND STATION KIT with 30' (9.1 m) Extension Cable
	11202-004	2ND STATION KIT with 40' (12.2 m) Extension Cable
	11202-005	2ND STATION KIT with 50' (15.2 m) Extension Cable
	30254-002D	Replacement 2ND STATION KEY PAD ONLY (must only be used at the 2nd station helm)

AUTO GLIDE™ GPS & Accessories

Thumbnail Image	Lenco Part #	Description
	11103-001	NMEA 2000 (16 CH) GPS ANTENNA / RECEIVER KIT Contents: (1) GPS Antenna, (1) Tee Connector and (1) Female Resistor
	30266-001	NMEA 2000 (16 CH) GPS ANTENNA ONLY
	15503-101	15' (4.6 m) GPS ANTENNA EXTENSION KIT Contents: (1) 15' (4.6 m) Extension Cable, (1) Tee Connector and (1) Female Resistor
	30269-003D	2' (60.9 cm) EXT. CABLE FOR CAN bus 2 (Network System) NMEA Female to NMEA Male
	30269-002D	6' (1.8 m) EXT. CABLE FOR CAN bus # 2
	30269-001D	15' (4.6 m) EXT. CABLE FOR CAN bus # 2
	30269-004	25' (7.6 m) EXT. CABLE FOR CAN bus # 2
	30258-001D	CAN bus SPLITTER CONNECTOR HUB - 6" (15.2 cm)
	70567-001	GPS ANTENNA / RECEIVER MOUNTING BRACKET Stainless Steel with mounting screws

AUTO GLIDE™ Control Box Accessories

Thumbnail Image	Lenco Part #	Description
	30140-001D	36" (91.4 cm) Power Pigtail for Single Actuator Systems
	30140-202D	72" (182 cm) Power Pigtail for Single Actuator Systems
	10249-001	72" (182 cm) Power Pigtail for Dual Actuator Systems
	70568-001	Auto Glide Control Box Mounting Bracket Stainless Steel with mounting screws

REPLACEMENT PARTS & ACCESSORIES



Universal Actuator Mounting Bracket Replacement Kit (for 1 Actuator)

Kit includes:

15085-001 Upper Mounting Bracket w/ Gland Seal
50015-001 Upper Mounting Bracket w/ Gland Seal
50014-001 Lower Mounting Bracket

All stainless steel hardware and Delrin pin
Clamshell packaged.

15099-001



3 3/4" (9.5 cm) Sacrificial Anode

Zinc Sacrificial Anode w/mounting screw.
Pack of 2. Clamshell packaged.

15093-001

1 7/8" (4.8 cm) Sacrificial Anode

Zinc Sacrificial Anode w/mounting screw.
Pack of 2. Clamshell packaged.

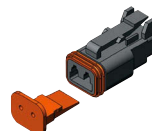
15092-001



Upper Mounting Bracket with Gland Seal

Vandar (3 screw holes, 1 wire hole)
2008 through Current - New Style
Clamshell packaged

15085-001



Deutsch Plug Kit (Pack of 5)

Actuator and Actuator Extension Harness
Deutsch Plug Kit. Includes 5 plugs and 5
wedges. Clam shell packaged.

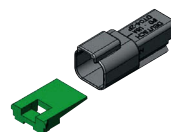
15107-001



Standard Upper Mounting Bracket with Gland Seal

Vandar (3 screw holes, 1 wire hole)
Through 2007 - Old Style
Clamshell packaged

50015-001D



Deutsch Receptacle Kit (Pack of 5)

Actuator Extension Harness Deutsch
Receptacle Kit. Includes 5 receptacles
and 5 wedges. Clam shell packaged.

15107-002



Standard Lower Mounting Bracket

Vandar (3 screw holes)
Clamshell packaged

50014-001D



Deutsch Plug Electrical Repair Kit (16 pieces)

Includes 16 pieces total (plugs, receptacles
and wedges). Clam shell packaged.

15086-001



7 Degree Mounting Shim

For Upper & Lower Mounting Bracket - Vandar
Clamshell packaged - Only compatible with
50014-001D and 50015-001D

50015-002D



Compact Upper Bracket

Vandar (2 screw holes, 1 wire hole)
To be used in applications with
limited space - Clamshell packaged

50225-001D



Hinge & Upper Bracket Mounting Screws

44 replacement screws - Clamshell
packaged

10030-001D



Deutsch Connected Actuator Extension Harnesses

ABYC Compliant (Sold individually - one needed per actuator.)

Lenco Part #	Description
30133-001D	7' (2.3 m) 16-AWG / Clamshell Packaged
30133-002D	14' (4.3 m) 16-AWG / Clamshell Packaged
30133-103D	20' (6.1 m) 14-AWG / Clamshell Packaged
30142-001	26' (7.9 m) 14-AWG / Poly Bagged
30142-002	32' (9.8 m) 14-AWG / Poly Bagged
30142-104	45' (13.7) 12-AWG / Poly Bagged

REPLACEMENT PARTS & ACCESSORIES



Replacement Standard Key Pad Only
(Includes nylon mounting nuts)
Clamshell packaged
30006-001D



Replacement LED Indicator Key Pad Only
(Includes nylon mounting nuts)
Clamshell packaged
30007-001D



Standard Switch Control Box Only
Box packaged
30134-001

LED Switch Control Box Only
Box packaged
30072-001



LED Dual Actuator Switch Control Box Only
Box packaged
30112-001



Replacement Hatch Lift Pull Pin
Clamshell packaged
60101-001D



Delrin Mounting Pin (2 pack)
For 101 & 102 Actuators (1.5")
Clamshell Pack of 2
15087-001

Delrin Mounting Pin (10 pack)
For 101 & 102 Actuators - 1.5" (3.8 cm)
Dealer pack of 10 - Clamshell packaged
15087-002



36" (91.4 cm) Power Pigtail
36" (91.4 cm) Pigtail for 124SSR, 123SC & 122
(14-AWG wires w/ DTP Plug)
Clamshell Packaged
30140-001D

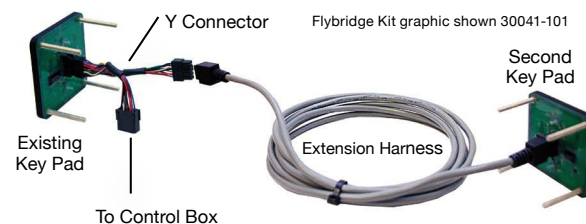


72" (182 cm) Power Pigtail
72" (182 cm) Pigtail for 124SSR, 123SC & 122
(10-AWG Wires w/ DTP Plug)
Clamshell Packaged
30140-202D

72" (182 cm) Power Pigtail
Pigtail for 123DRSCCB Dual Ram Control Box
(10-AWG Wires w/ DTHD Plug) Box Packaged
10249-001

Flybridge Switch Kits

For Standard and LED Indicator Switch Kits.



Add a second station key pad to your current switch by selecting from the charts shown below:

Flybridge Kits For Standard Switch 15069-001

(Includes Standard Key Pad, Y Connector & Desired Shielded Length Wire Harness)

Lenco Part#	Description
30041-101	10' (3 m) Shielded Flybridge Kit - Standard
30041-102	20' (6.1 m) Shielded Flybridge Kit - Standard
30041-103	30' (9.1 m) Shielded Flybridge Kit - Standard
30041-104	40' (12.2 m) Shielded Flybridge Kit - Standard
30041-105	50' (15.2 m) Shielded Flybridge Kit - Standard

Flybridge Kits For LED Indicator Switch 15070-001 & 15071-001

(Includes LED Indicator Key Pad, Y Cable & Desired Shielded Length Wire Harness)

Lenco Part#	Description
30041-001	10' (3 m) Shielded Flybridge Kit - LED Indicator
30041-002	20' (6.1 m) Shielded Flybridge Kit - LED Indicator
30041-003	30' (9.1 m) Shielded Flybridge Kit - LED Indicator
30041-004	40' (12.2 m) Shielded Flybridge Kit - LED Indicator
30041-005	50' (15.2 m) Shielded Flybridge Kit - LED Indicator



Replacement Y Connector Harness Only
Clamshell packaged
30209-001D



Key Pad Extension Harnesses

For extending the distance between the Key Pad and the control box when the measurement exceeds 34" (86.4 cm)

Lenco Part#	Description
30097-001	10' (3 m) Extension Cable
30097-002	20' (6.1 m) Extension Cable
30097-003	30' (9.1 m) Extension Cable
30097-004	40' (12.2 m) Extension Cable
30097-005	50' (15.2 m) Extension Cable



Lenco Marine Inc.
4700 SE Municipal Court
Stuart, Florida 34997

TEL 772.288.2662
FAX 772.288.2566

www.lencomarine.com
www.lencoautoglide.com
info@lencomarine.com



Engineered & manufactured
in the United States to make
your boating fun, safe and
trouble-free since 1986.

Scan QR code
or visit us at
lencomarine.com



WE MAKE THE BEST BOATS BETTER!